

# Modeling Nearshore Dynamics of Extreme Storms in Complex Environments of Connecticut

Chang Liu, Yaprak Onat, Yan Jia,  
James O'Donnell

*Connecticut Institute for Resilience and Climate Adaptation,  
University of Connecticut, Groton, CT*

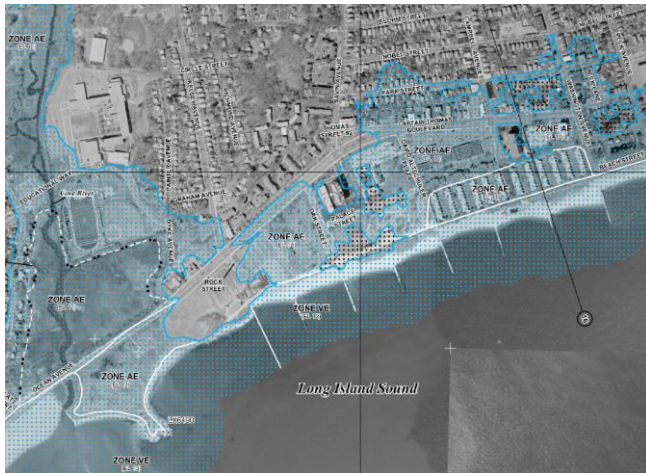
# Background



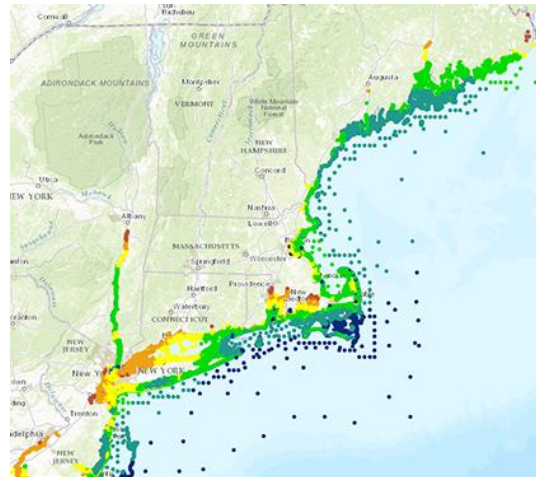
- Flood hazard planning requires the accurate estimation of total water elevation.
- The coastal topography and nearshore circulation conditions impact the flood mapping in complex environments.
- Some conventional approaches are flawed in several ways:
  - 1) using bathtub approach,
  - 2) insufficient resolutions or model physics
  - 3) failing to calibrate and validate with real-time data, or
  - 4) not considering sea-level rise



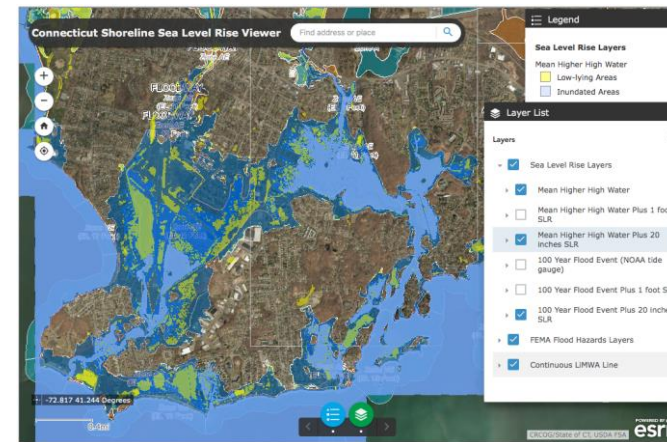
# Existing Flood Map Products



FEMA Flood Insurance Map



North Atlantic Coast  
Comprehensive Study  
(NACCS)



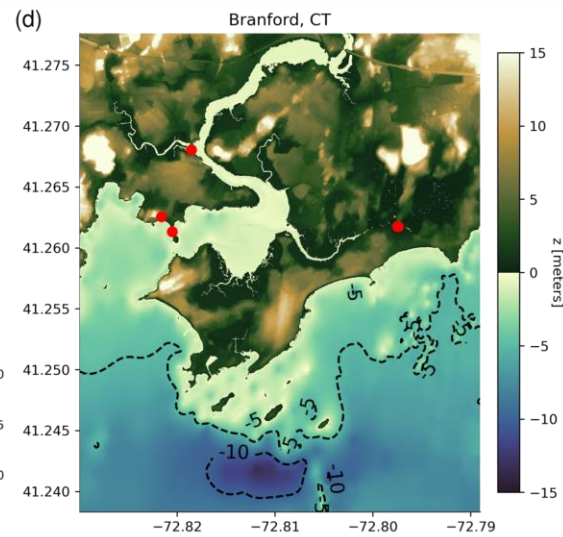
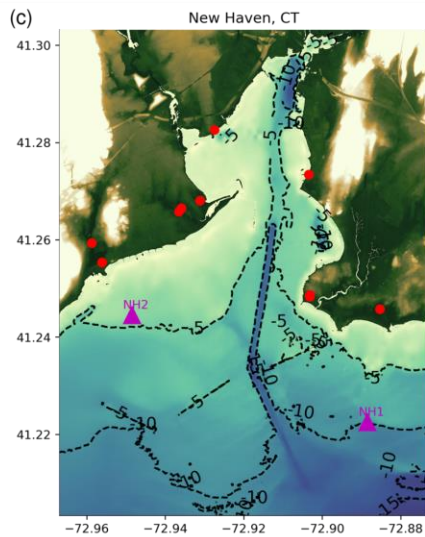
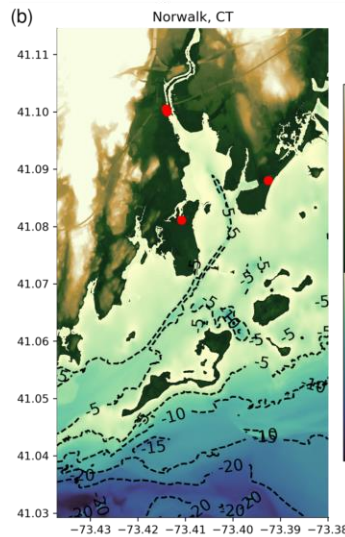
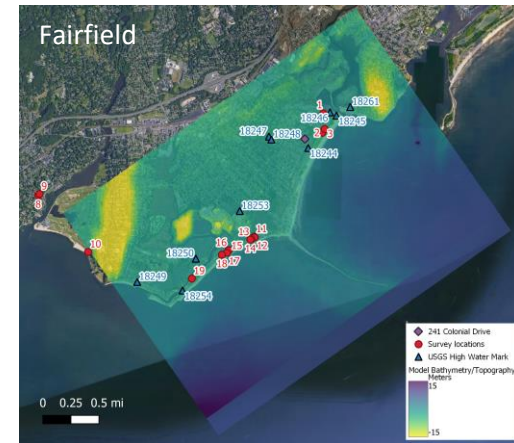
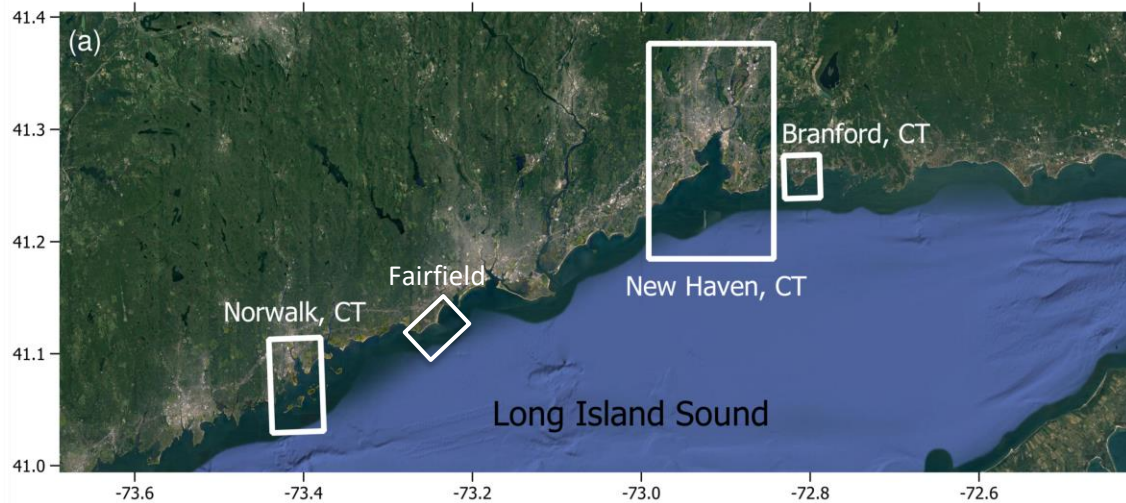
CIRCA FVCOM-SWAVE

# Objectives

- Create accurate flood maps using a capable, high-resolution wave model to determine total water elevation on the shores
- Validate the models with observations
- Examine local sea-level rise predictions of storms with 1% (100-year) and 10% (10-year) annual exceedance probability by the year 2050 in Connecticut

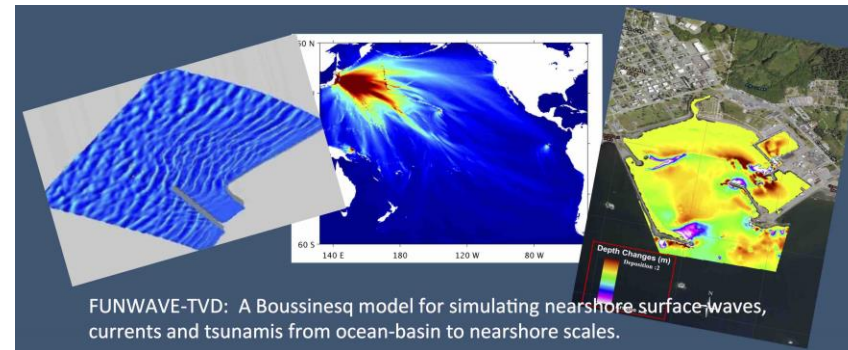
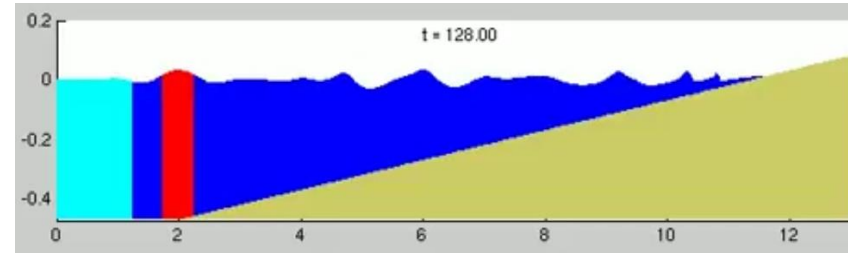


# Study Area



# Model Setup

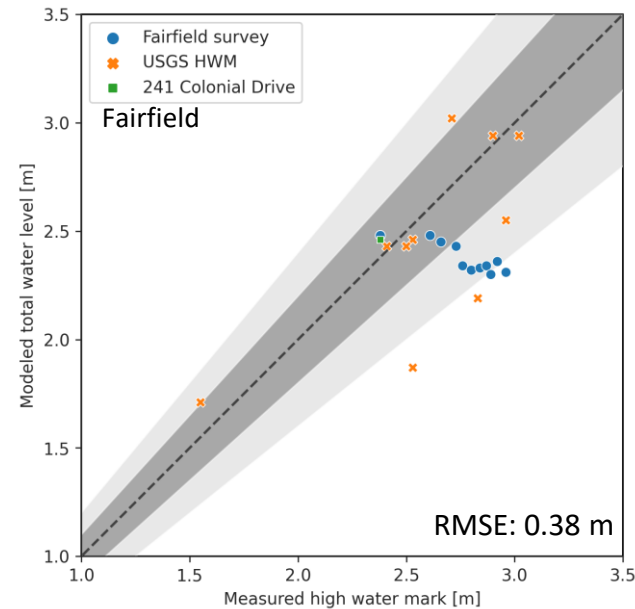
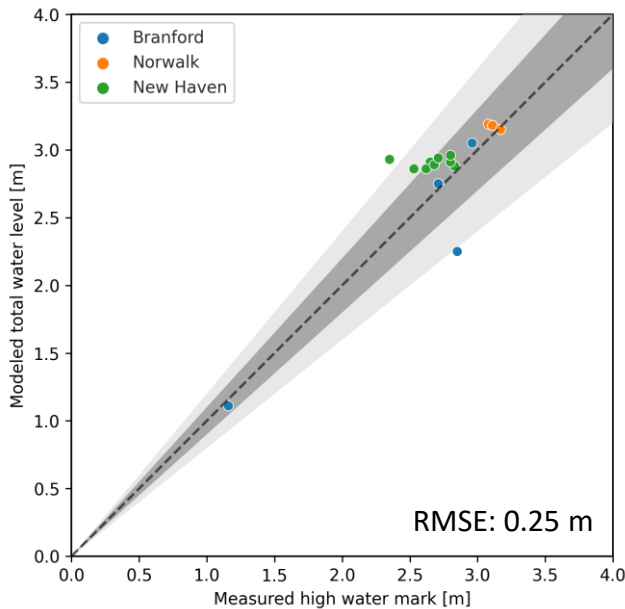
- FUNWAVE-TVD: phase-resolving wave model
- Wavemaker generates waves with specified wave height, frequency, and direction
- Grid resolution 2 m (6.5 ft)
- Simulate 1% (100-year) and 10% (10-year) annual exceedance probability



[fengyanshi.github.io](https://fengyanshi.github.io)

# Validation: High Water Level

- Compare with observed high water during super storm Sandy
- Modeled values are close to observations



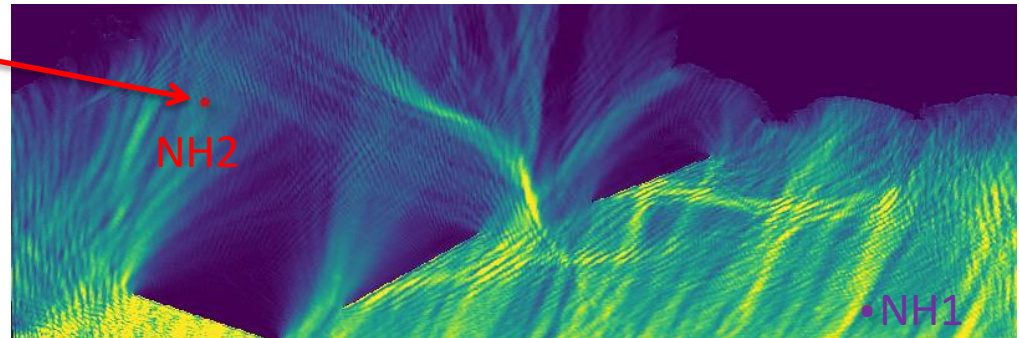


# Validation: Wave Height

- Compare with observed wave height at stations near breakwaters in 2015
- Model forced with wave characteristics observed at NH1, compare modeled vs observed values at NH2

Significant Wave Height at NH2 (meters)

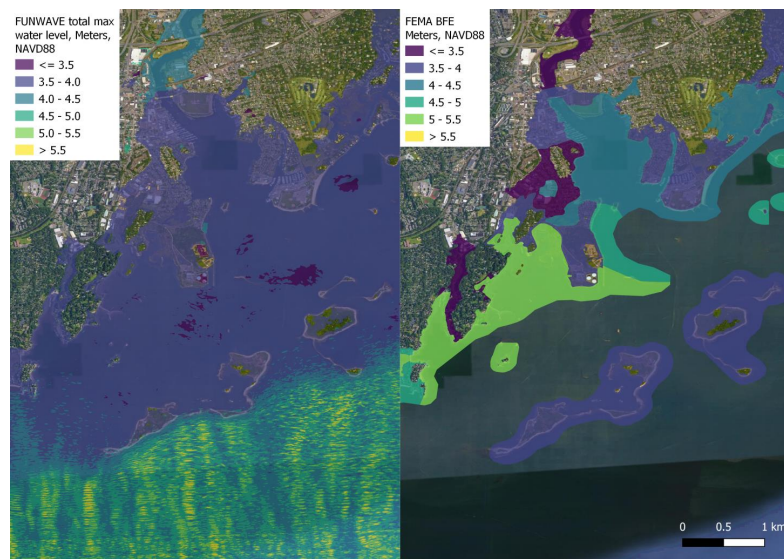
	01/25	02/02	03/26
Observed	0.69	0.59	0.44
FUNWAVE Modeled	0.56	0.47	0.37



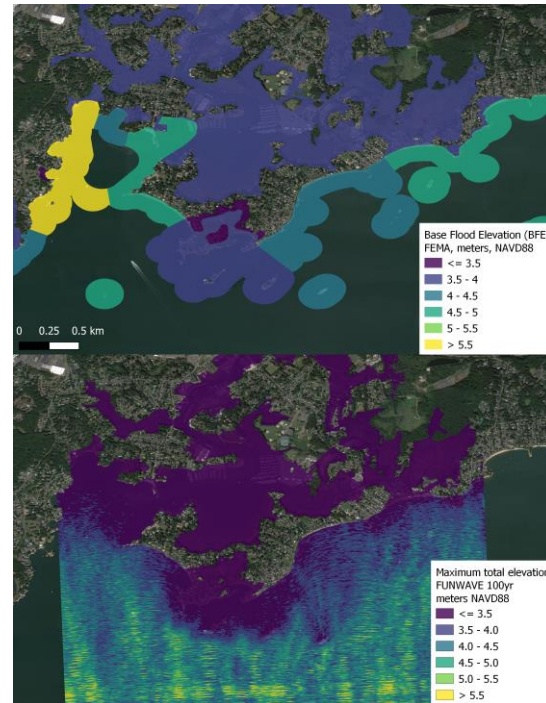


# Comparison with FEMA (100-year)

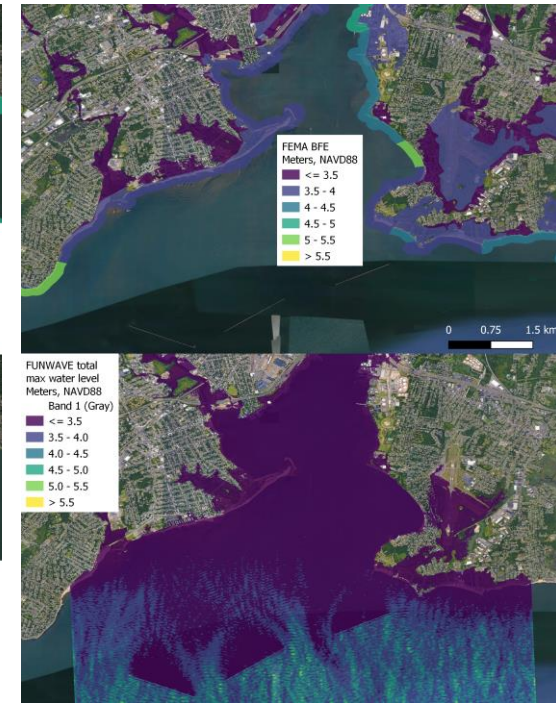
Norwalk



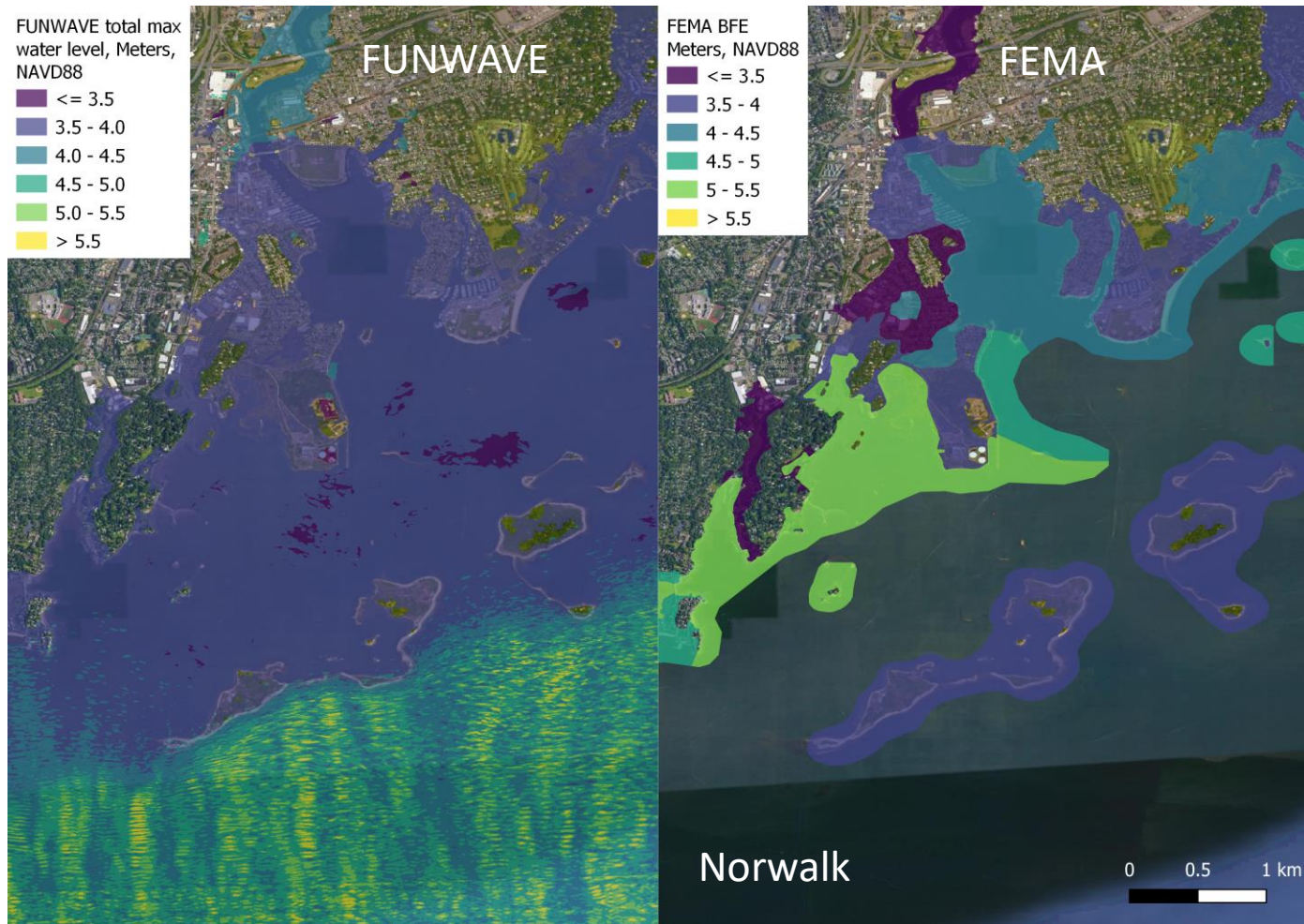
Branford



New Haven



# Comparison with FEMA (100-year)



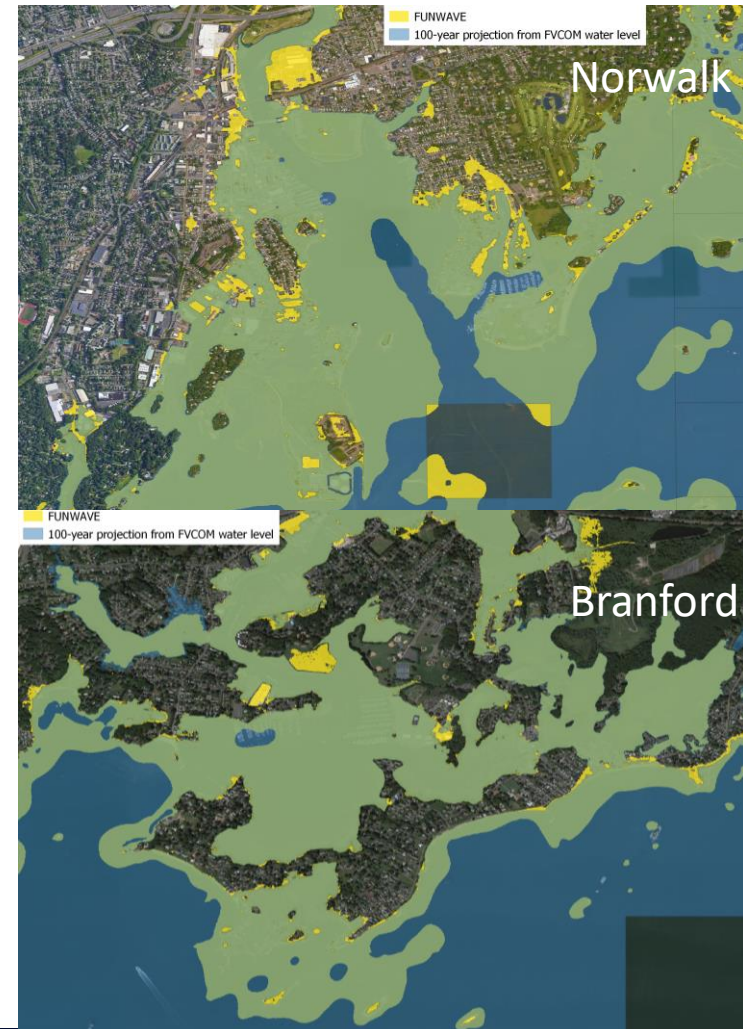


# Comparison with NACCS (100-year)



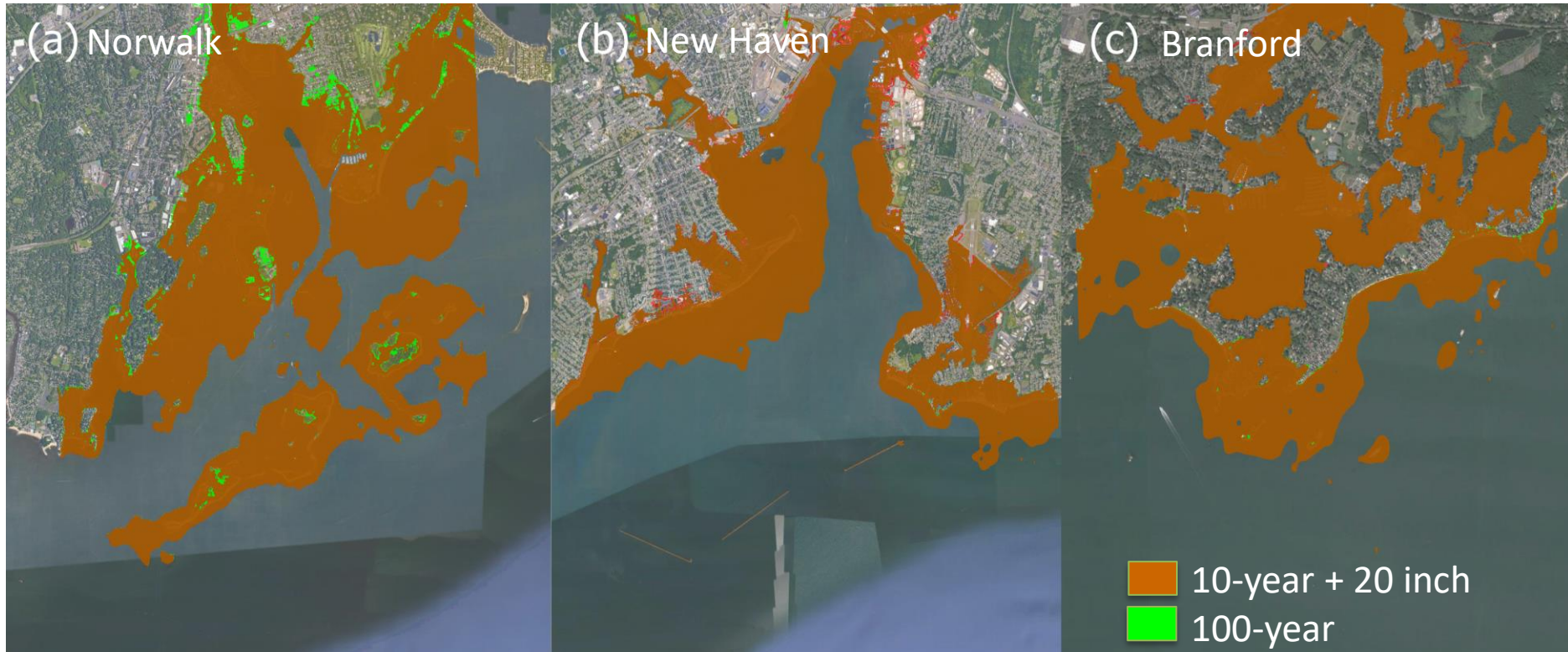


# Comparison with FVCOM-SWAVE





# 10-yr with sea-level rise



# Summary

- The FUNWAVE-TVD model is found to model wave processes more accurately in shallow water regions compared to the empirical equation application of FEMA and coupled circulation-phase averaged model application of NACCS and FVCOM-SWAVE.
- We also examined local sea-level rise predictions of storms with 1% (100-year) and 10% (10-year) annual exceedance probability by the year 2050 in Connecticut and found that the flood extent of these two storms showed little to no difference due to the topographic conditions.
- We suggest the planning approaches consider the increase in the frequency of the storms in the predicted inundation zones due to sea-level rise.



# THANK YOU

## Questions?